

For Windows

Download Driver (UPDPCL6Win_398190MU):

<https://public.integration.yamayuri.kiku8101.com/publicdownload/download?fileId=B8671CF7-02FA-44D7-88FA-06CDBDB233F8>

Install: double click [Setup64], select [Install (Manual Setting)]

Please select the function.

Install
(Network Search)

Install
(Manual Setting)

You can select [Network Search] or [Manual Setting] to install Print Queues and Drivers.

Standard Update

Custom Update

You can select [Standard Update] or [Custom Update].
To choose the Print Queue to update, select [Custom Update].

Delete

You can delete the Print Queues and Printer Drivers installed on PC.

WebView2 Installation

Install WebView2 required for IdP authentication.
Click the button, to close this installer and start the WebView2 installation.

Click [Add to List], then click [Port Settings]

To install a Print Queue, click [Add to list] and edit Queue Name, Port, Model and Driver Name.
Select the Print Queue you want to add. Click [Next].

<input type="checkbox"/>	Print Queue Name	Port	Model	Printer Driver Name	Sh...	Share Name
<input checked="" type="checkbox"/>	KONICA MINOLTA ...	LPT1:	KONICA ...	KONICA MINOLTA U...	Di...	

Print Queue Name
KONICA MINOLTA Universal PCL

Port
LPT1:

Port Settings...

Model
KONICA MINOLTA A3 Common

Printer Driver Name
KONICA MINOLTA Universal PCL

Share Setting and Share Name.
 Share this print queue.

Admin Settings

- 1-Sided:Default
- 2-Sided:Default
- 1-Sided:Lock
- 2-Sided:Lock
- Auto Color:Defa...
- Gray Scale:Defa...
- Auto Color:Lock

Add to list

Delete from list

Select [Port Name], input the IP address: 192.168.50.5, then press [OK]

Port Settings

Select [Port Name] or [Existing port] to print.
You can change the SNMP settings of print queue.

Port Name

192.168.50.5

Existing port

Port	Description
IP_192.1...	Standard TCP/IP Port
IP_192.1...	Standard TCP/IP Port
COM1:	Local Port
COM2:	Local Port
COM3:	Local Port
COM4:	Local Port
FILE:	Local Port
LPT1:	Local Port
LPT2:	Local Port

SNMP Settings...

OK Cancel

Choose the [Model] - KONICA MINOLTA C650i, then press [Next] and [Install].

Print Queue Name

KONICA MINOLTA Universal PCL

Port

192.168.50.5

Port Settings...

Model

KONICA MINOLTA C650i

Printer Driver Name

KONICA MINOLTA Universal PCL

Share Setting and Share Name.

Share this print queue.

Admin Settings

1-Sided:Default

2-Sided:Default

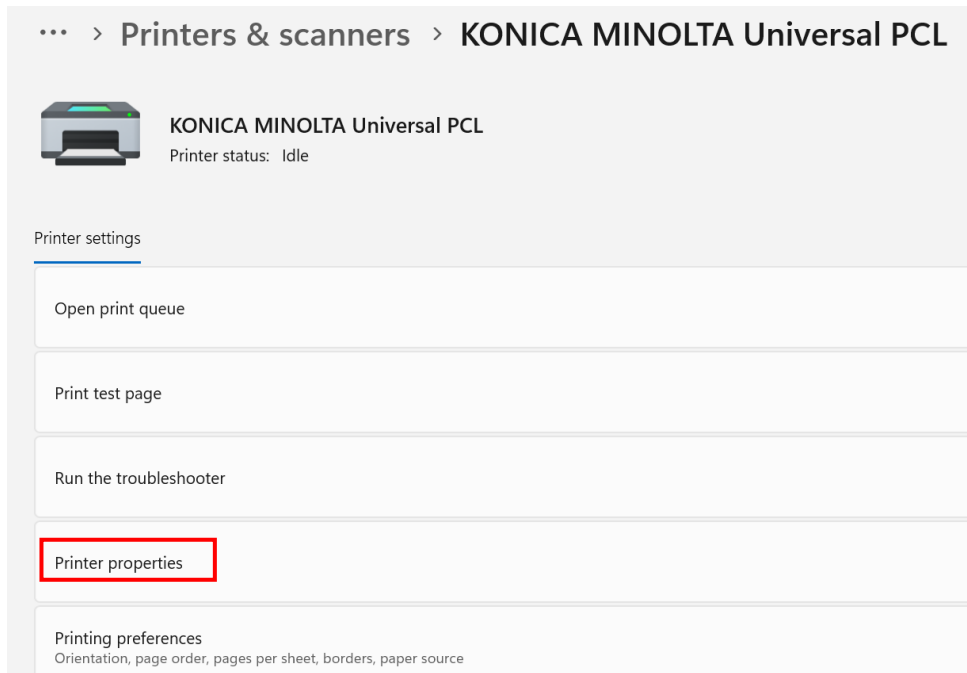
1-Sided:Lock

2-Sided:Lock

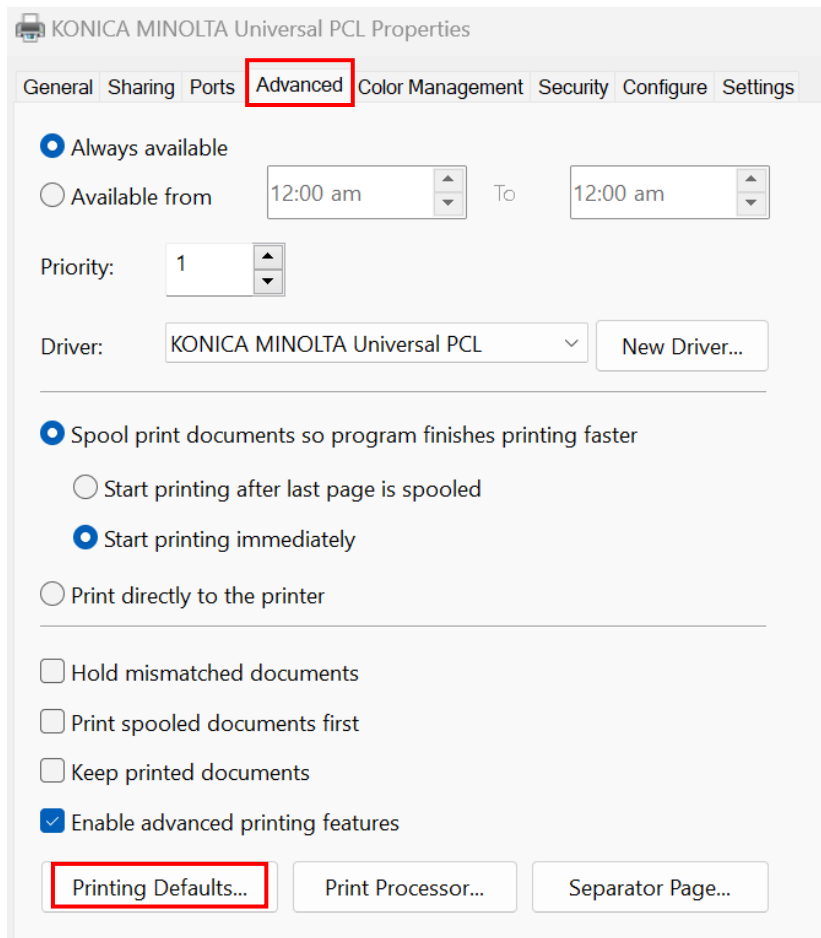
Auto Color:Def...

After installation, the printer is added successfully.

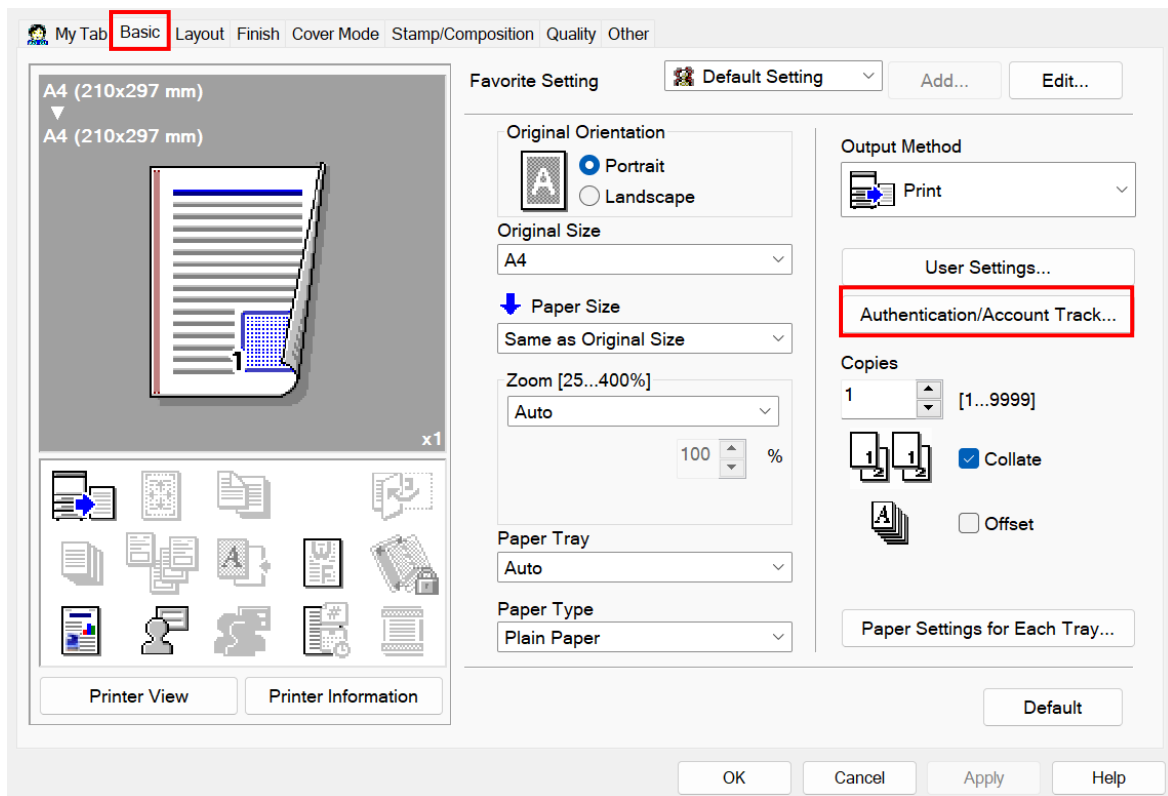
In laptop printer setting, choose [Printer properties]



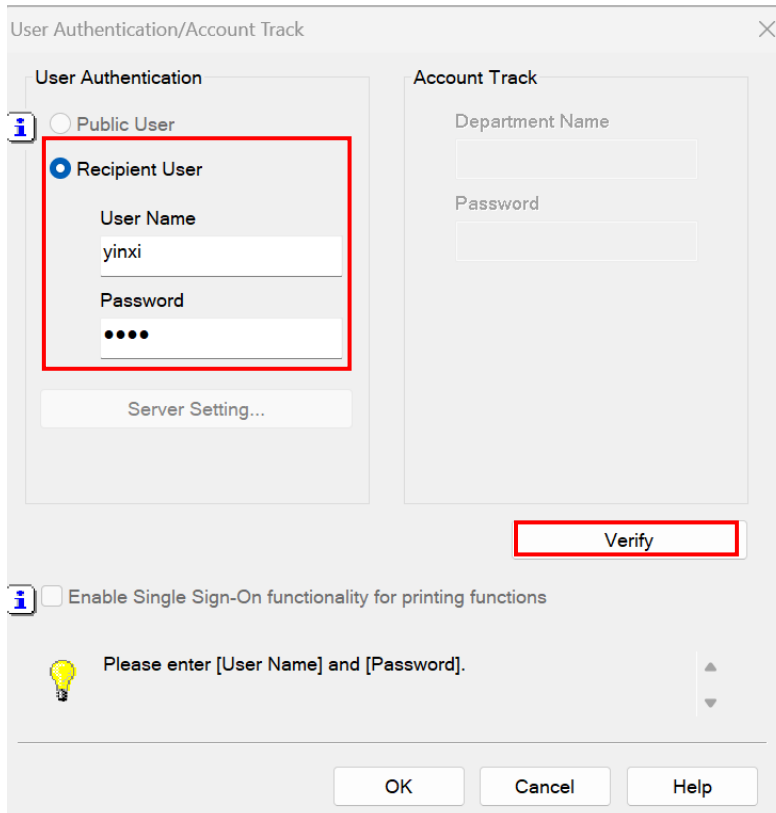
Go to [Advanced] → [Printing Defaults]



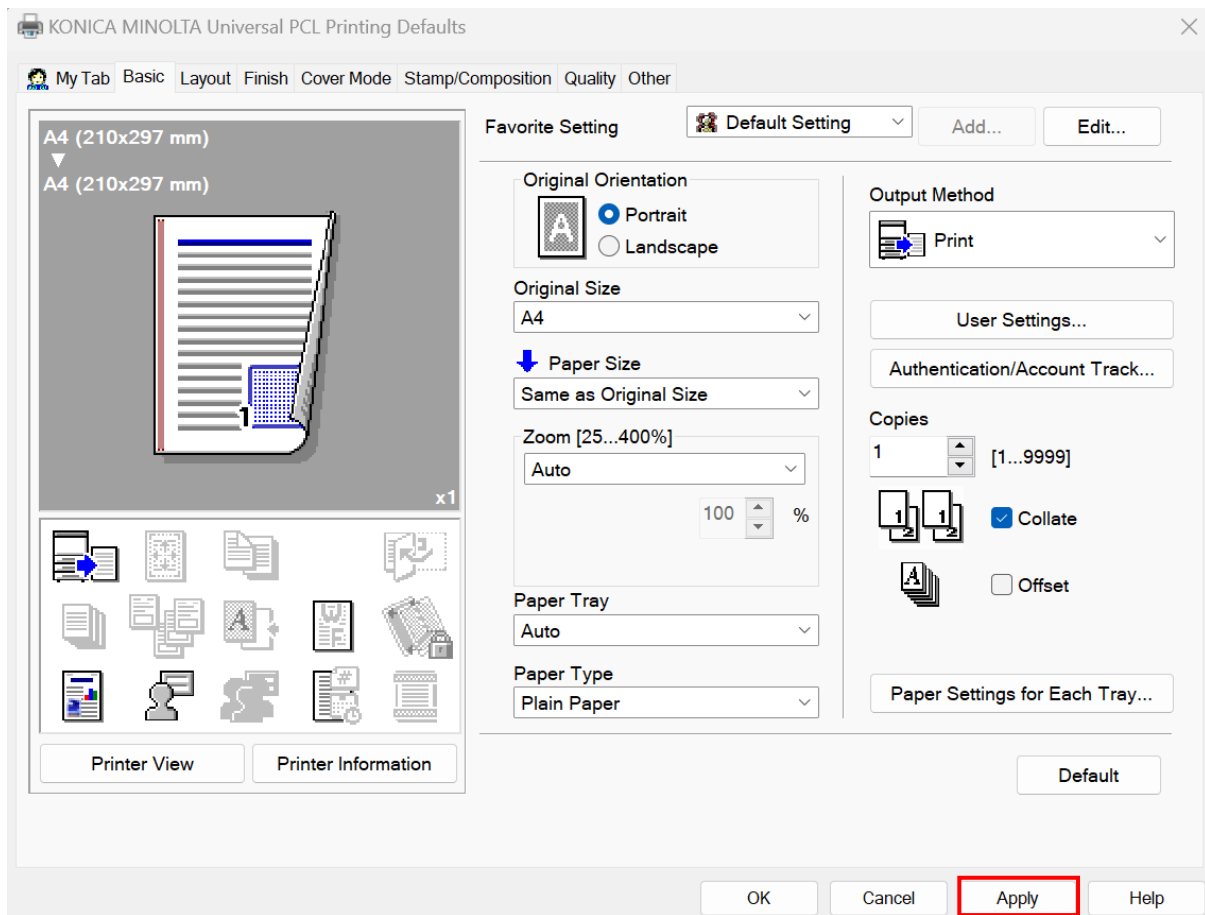
Go to [Basic] → [Authentication/Account Track]



Input your "User Name" and "Password", then click [Verify].



Press [Apply] → [OK]



For MacBook

How to Download The Printer Driver From The Download Centre

This is a guide on how to download the printer driver from the download centre website

Step 1 – Go to the driver download website by going to this link <https://www.btapac.konicaminolta.com/index.html>

Step 2 – Type in the model of the printer or select it from the drop down list under choose product then click go

Download the latest drivers, manuals a

Search your product:

Step 3 – The page will load the appropriate printer driver for the selected model, choose the Operating System for the MAC that you're using and download the printer driver that shows

Search your product:

Search your product:

bizhub C650i

GO >

Drivers

English

Printer Driver

Version
5.2.13A

Show all

- Linux
- Macintosh OS X 10.10
- Macintosh OS X 10.11
- macOS Big Sur 11
- macOS Catalina 10.15
- macOS High Sierra(OS X 10.13)
- macOS Mojave 10.14
- macOS Monterey 12
- ✓ macOS Sequoia 15
- macOS Sierra(OS X 10.12)
- macOS Sonoma 14
- macOS Ventura 13
- Windows 10
- Windows 10 (64bit)
- Windows 10 (ARM)
- Windows 11
- Windows 11 (ARM)
- Windows 7

Step 4 – after downloading the DMG file open it and you will be greeted with the screen bellow. Double click on the link ending with .dmg and download the DMG file

PostScript driver (5.2.13A MU) for KONICA MINOLTA bizhub Colour Series ✕

Software costs, format, design, concepts, methods and ideas associated with the computer program and all documentation related thereto.

2. COPYRIGHT AND INTELLECTUAL PROPERTY RIGHTS

This is a license agreement and not an agreement for sale. Konica Minolta Business Solutions Europe GmbH ("Konica Minolta") owns, or has been licensed from other owners ("Konica Minolta Licensor"), copyrights and other intellectual property rights of the Software, and any and all rights and title to the Software and any copy made from it are retained by Konica Minolta or Konica Minolta Licensor. In no event, this Agreement shall be deemed to assign any copyright and/or any intellectual property rights of the Software from Konica Minolta or Konica Minolta Licensor to you. Except as stated in this Agreement, you are not granted any rights to patents, copyrights, trade names, trademarks (whether registered or unregistered), or any other rights, franchises or licenses in respect of the Software. The Software is protected by copyright laws and international treaty provisions.

3. LICENSE

Accept License agreement

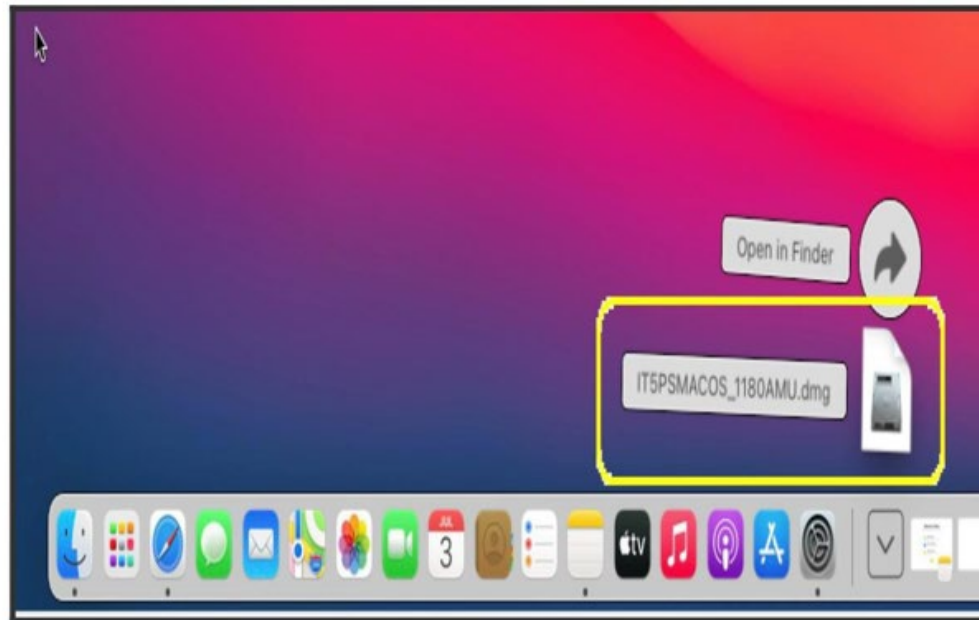
Files:

- [IT6PSMACOS_5213AMU.txt \(25KB\)](#)
- [IT6PSMACOS_5213AMU.dmg.\(53731KB\)](#)

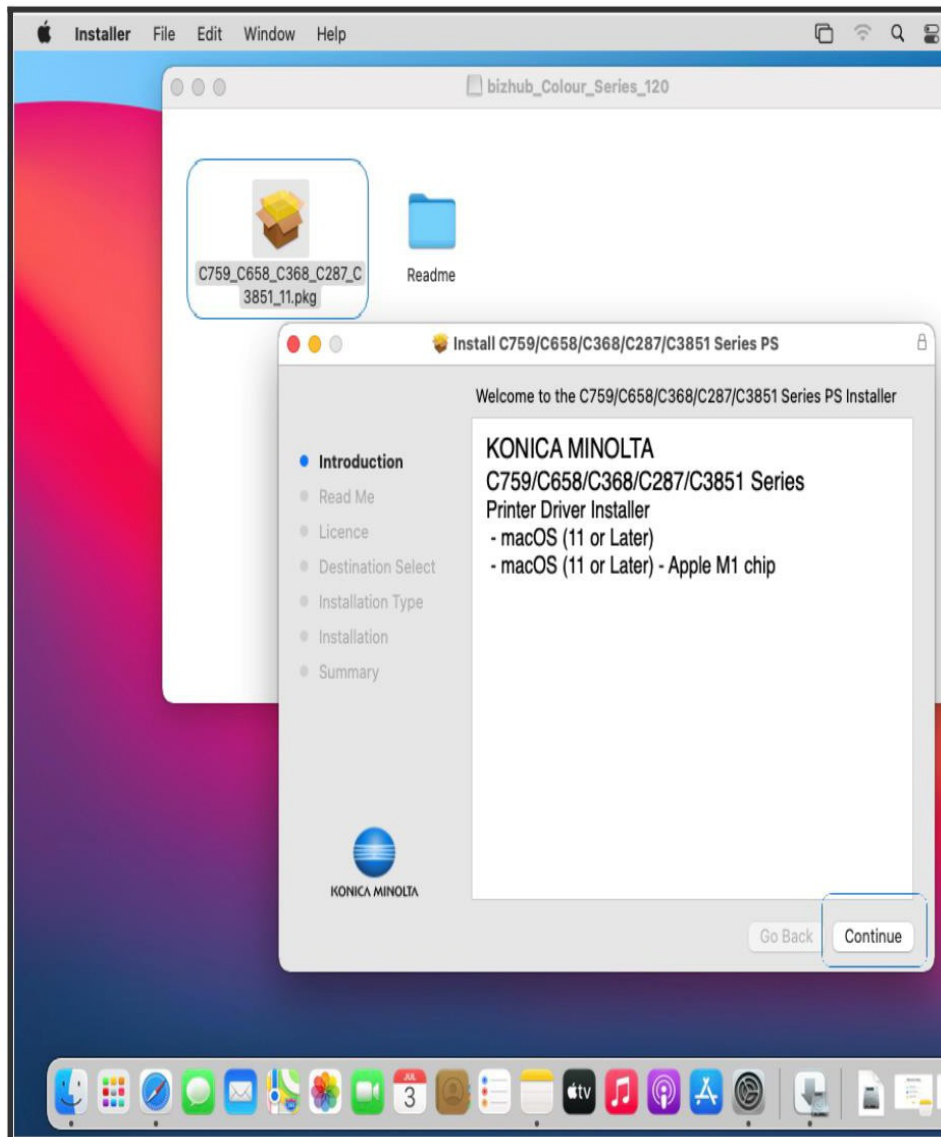
[< Close](#)

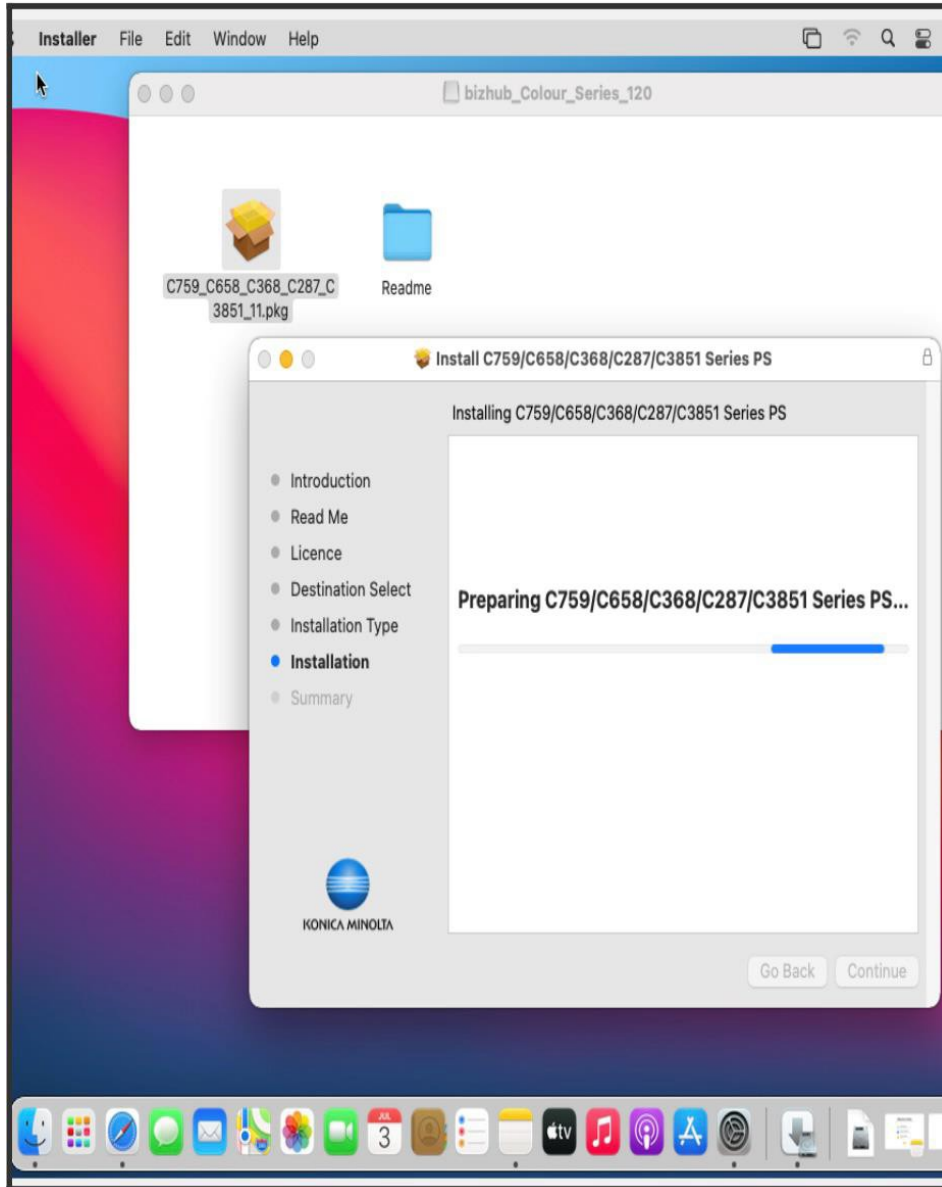
Step 5:

After downloading the Printer Driver, double click the file and it will unmount on the desktop, this will be used for Printer Driver installation later.



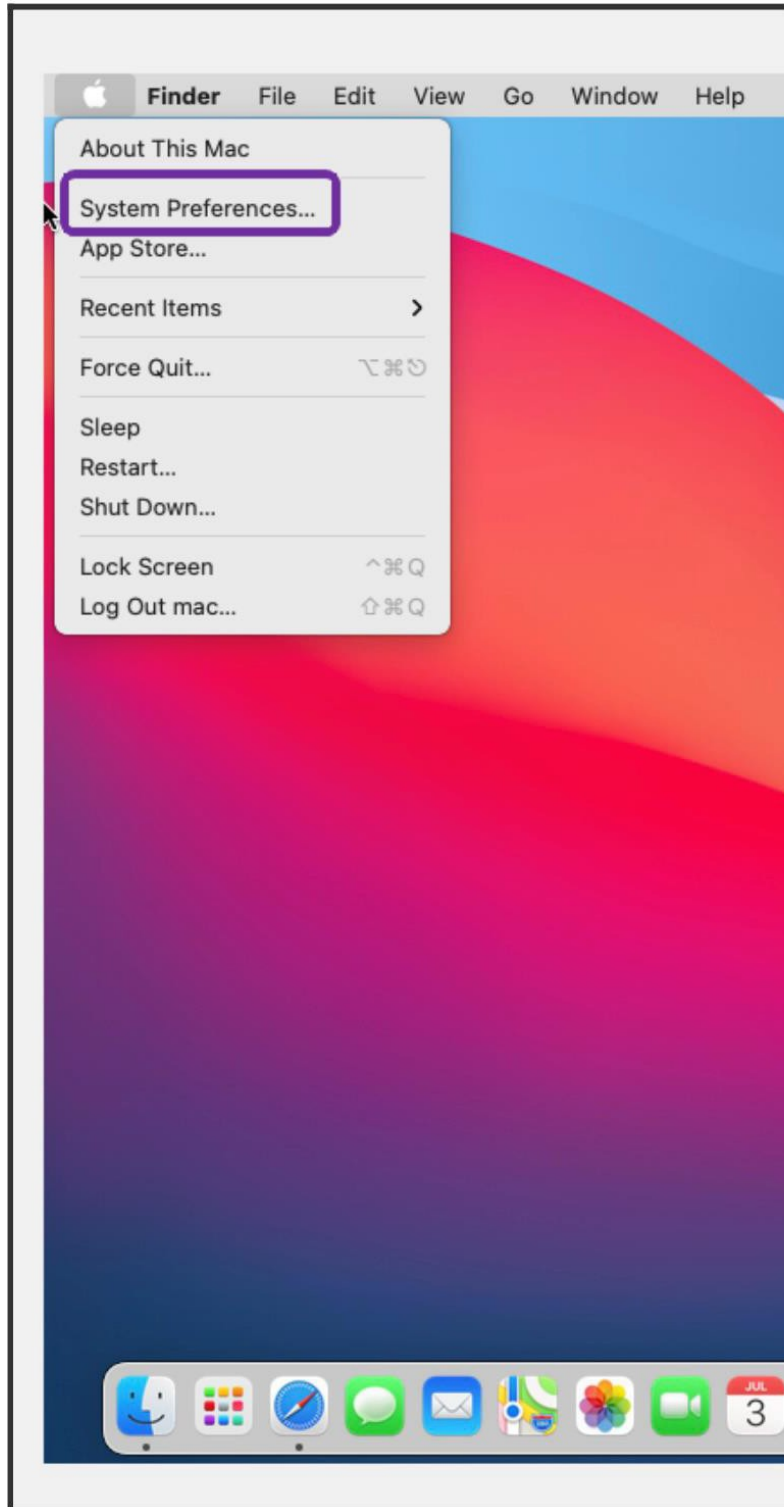
Double click on it, and install the Printer Driver accordingly also this process will ask to enter the MAC OS password. Once installation is done, proceed to next step.



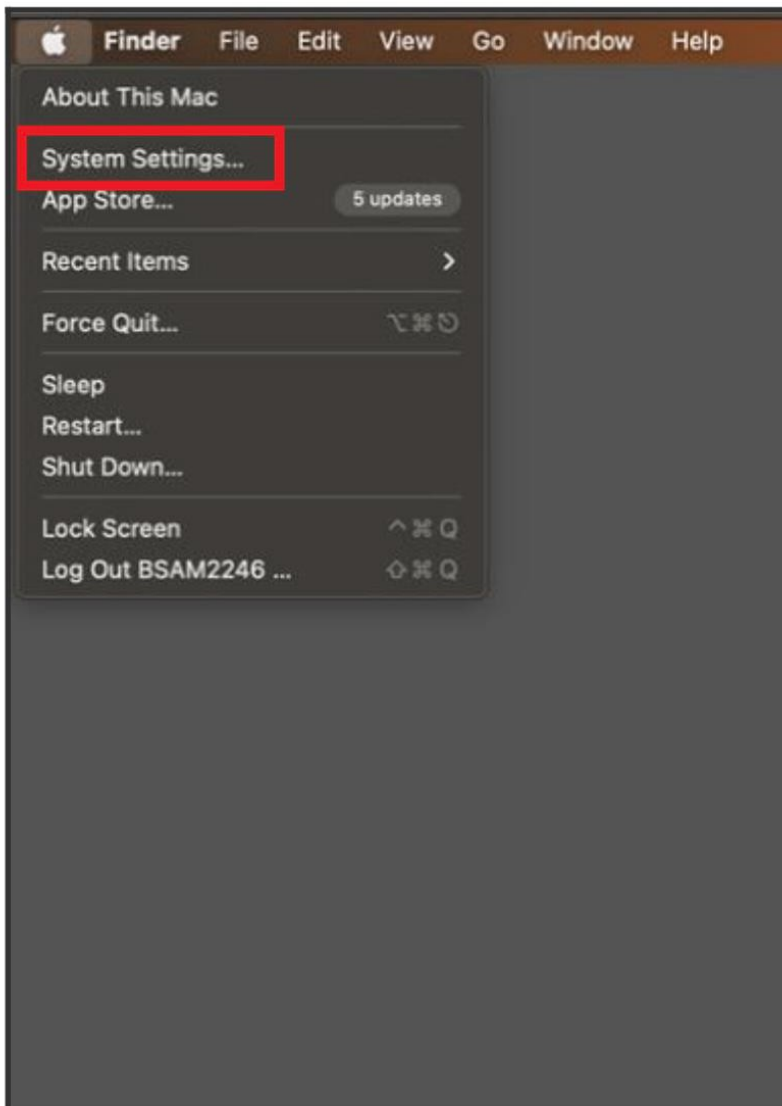


Driver Installation Steps

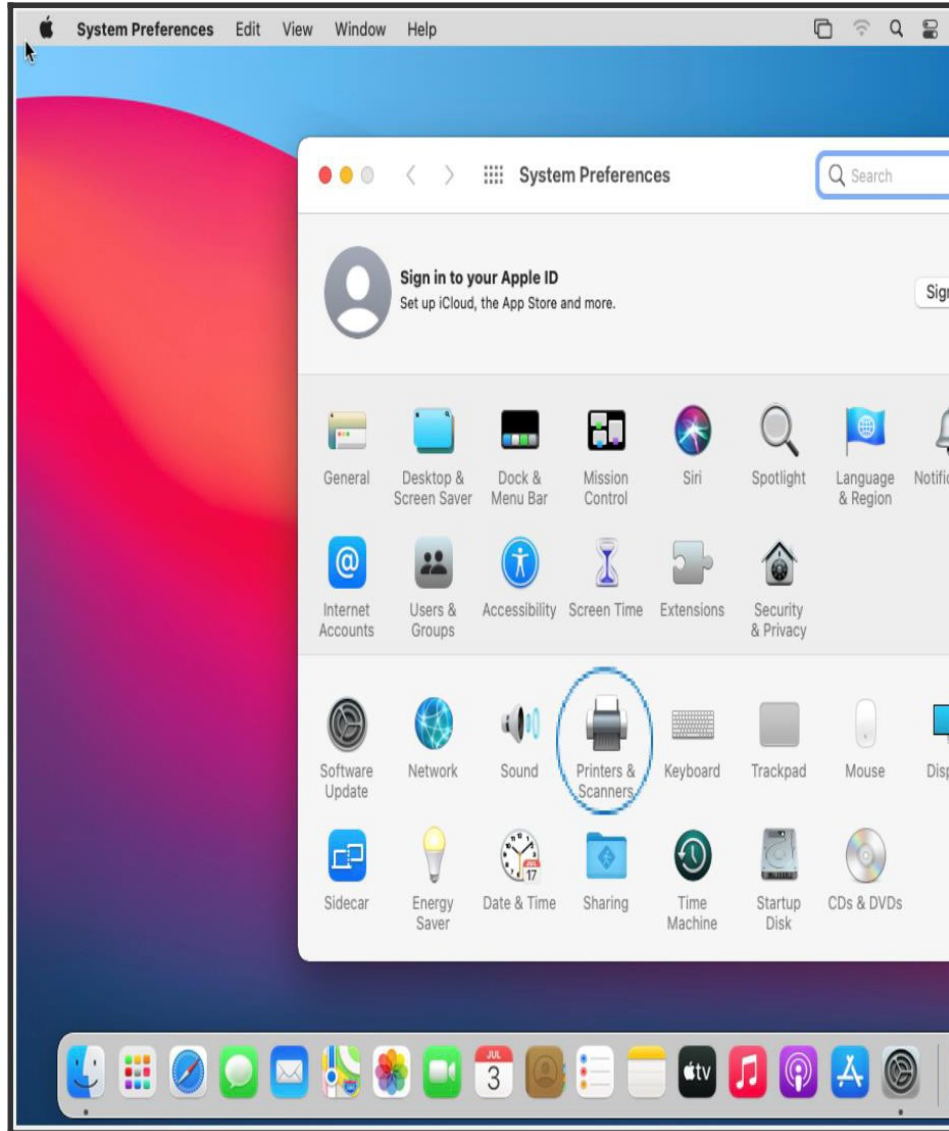
STEP 1 - Click on the Apple Icon on the upper left corner of the desktop and select System Preferences.



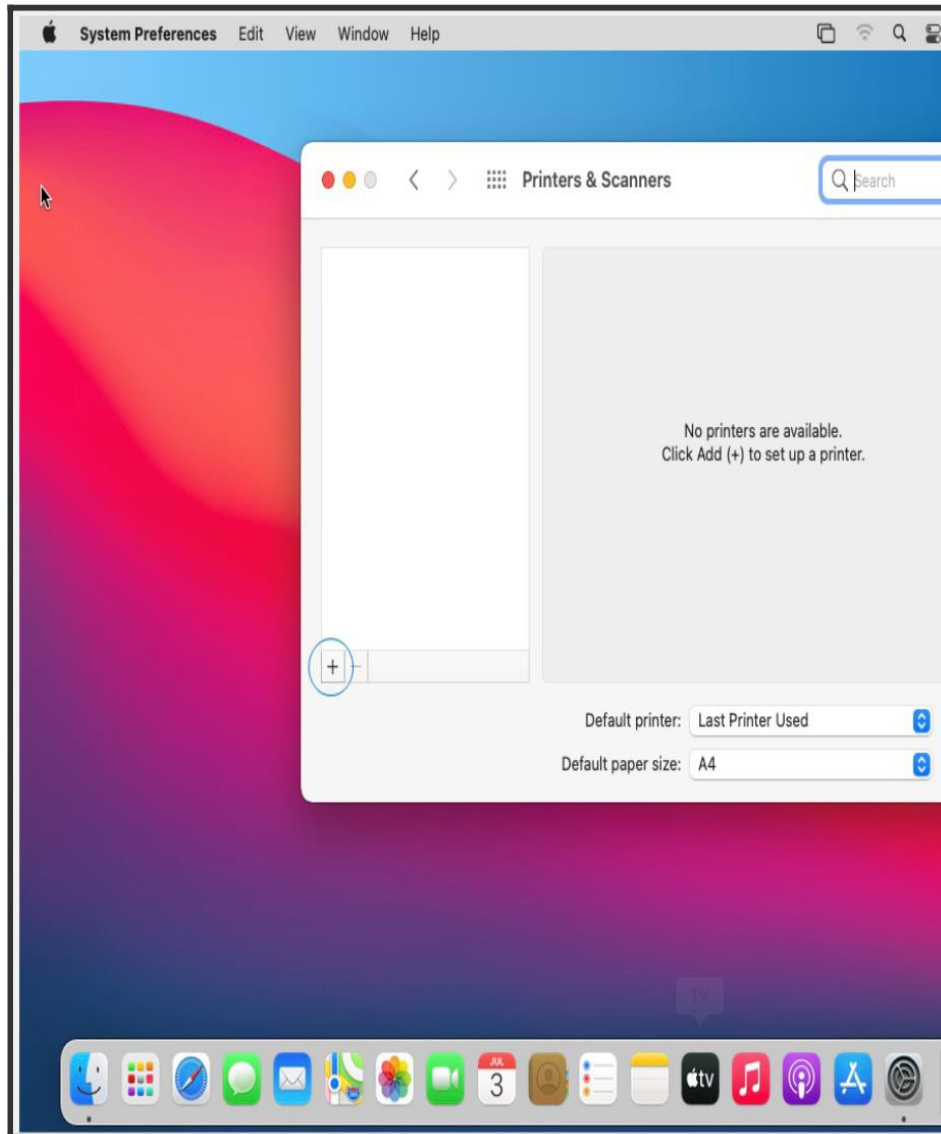
****For newer version like MAC OS Ventura 13, you need to select System Settings****



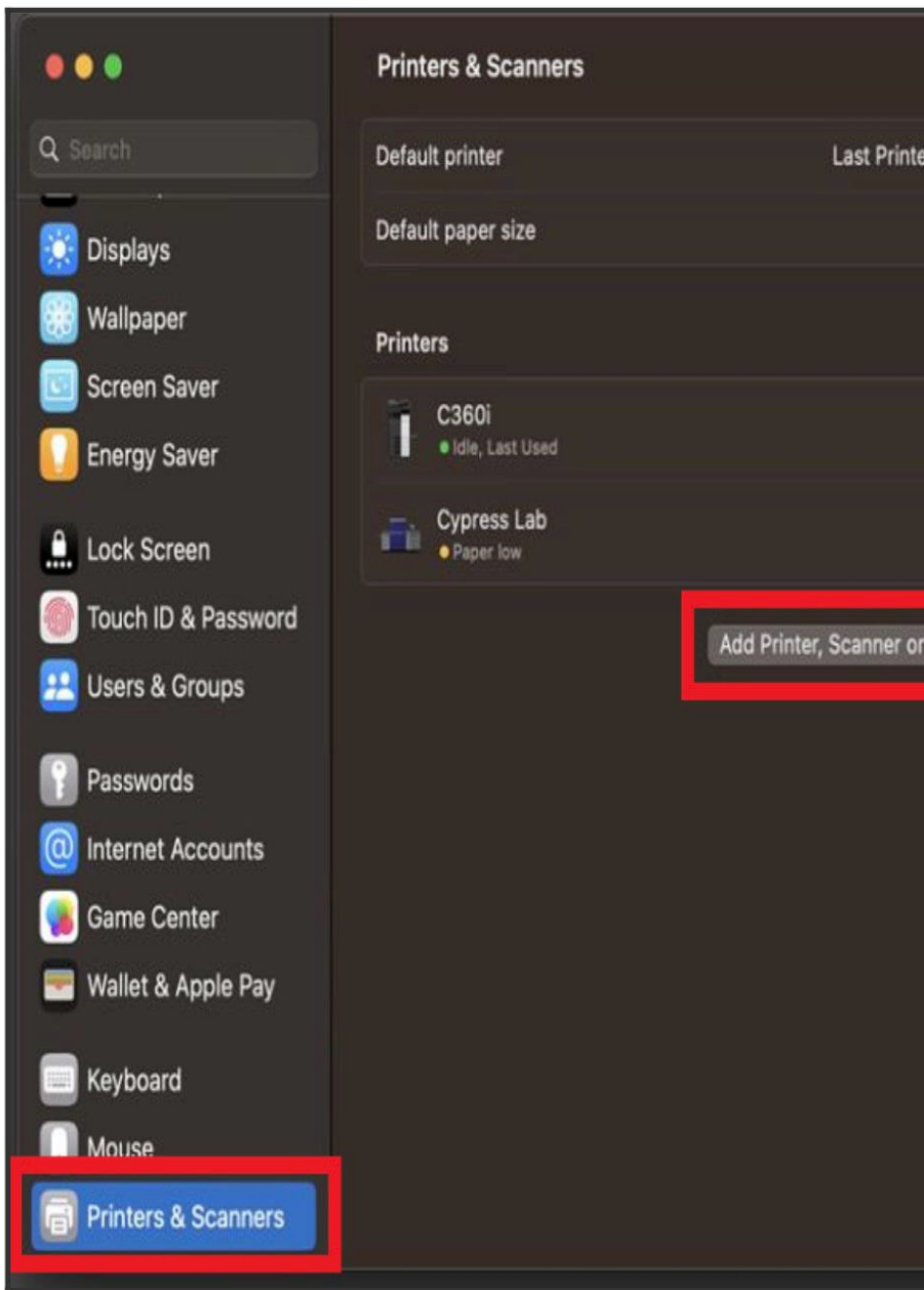
STEP 2 - Select Printers and Scanners.



STEP 3 - Click on Plus Icon to add a Printer.

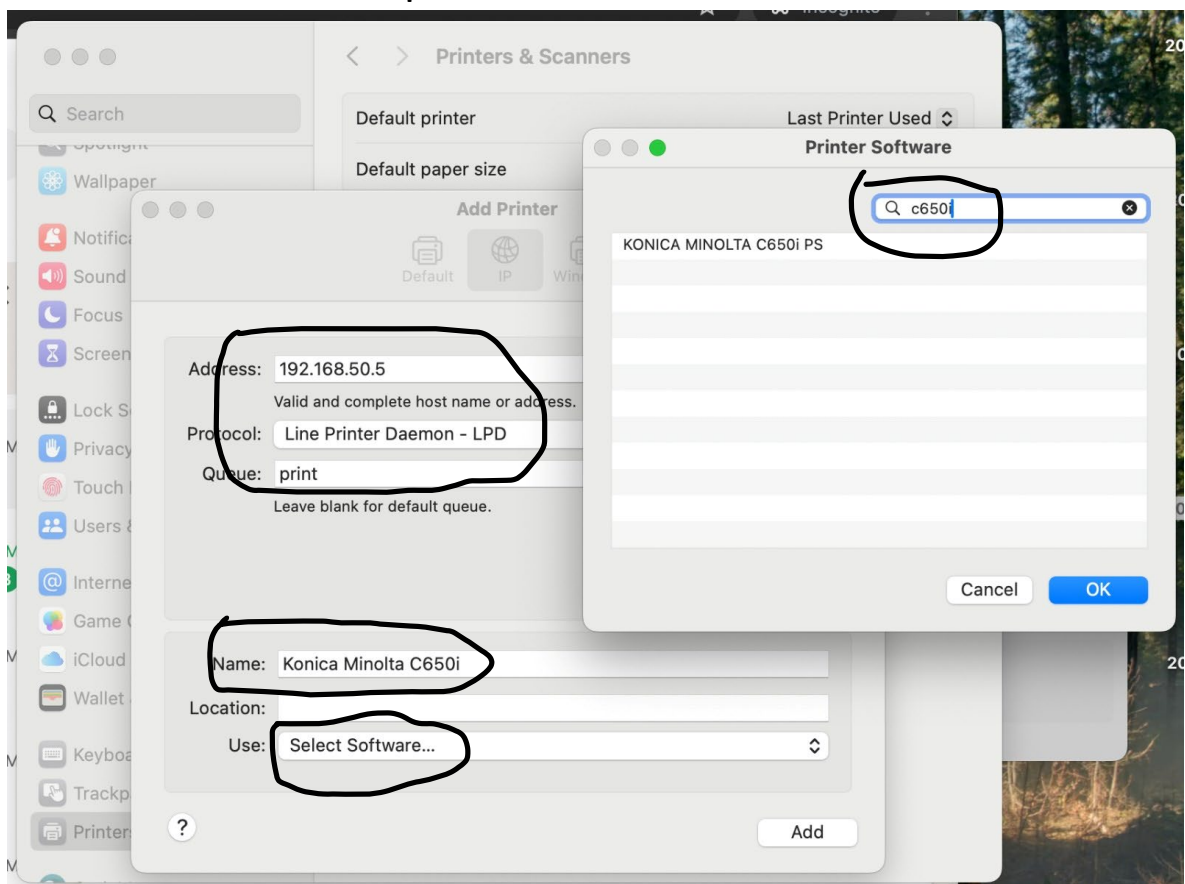


****For newer version like MAC OS Ventura 13, you need to scroll down and look for **Printers & Scanners** then click on **Add Printer, Scanner or Fax...******

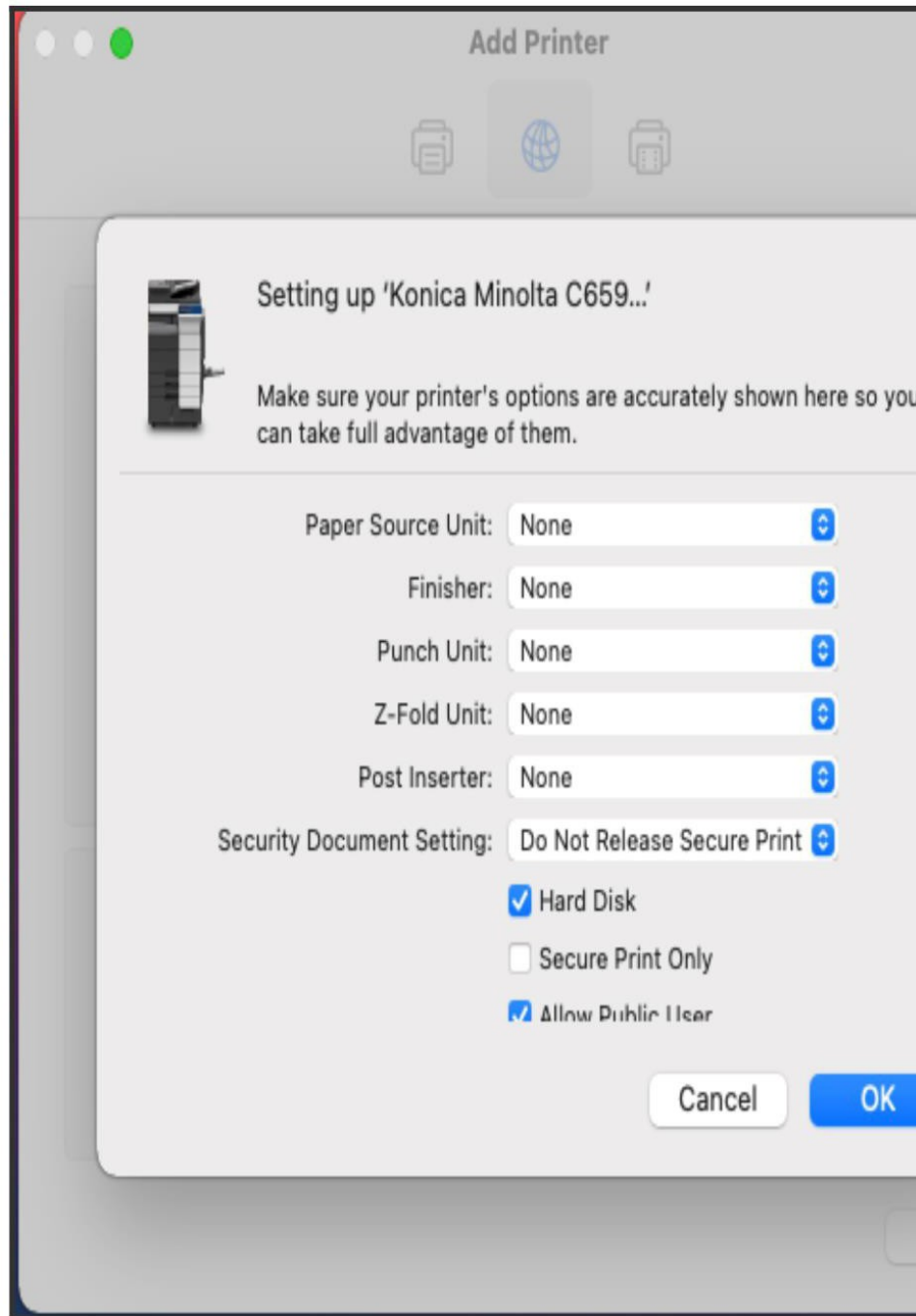


Step 4 – Add the info accordingly. Lastly select printer model and click OK, and click Add to add a printer

1. Address : Printer IP Address
2. Protocol: Select “Line Printer Daemon – LPD”
3. Queue: Put “lp” or “print”
4. Name: Printer Name Display, Example is “Koncia Minolta C650i”
5. Location: Put Location of the printer if needed
6. Use: Select Software
7. Search Icon on right hand side: Type in the Printer Driver model that needs to be installed, in this case C659
8. Select the KONICA MINOLTA C650i PS, Select OK and then click Add to add the printer driver



STEP 5 - Select OK to finalize installation.



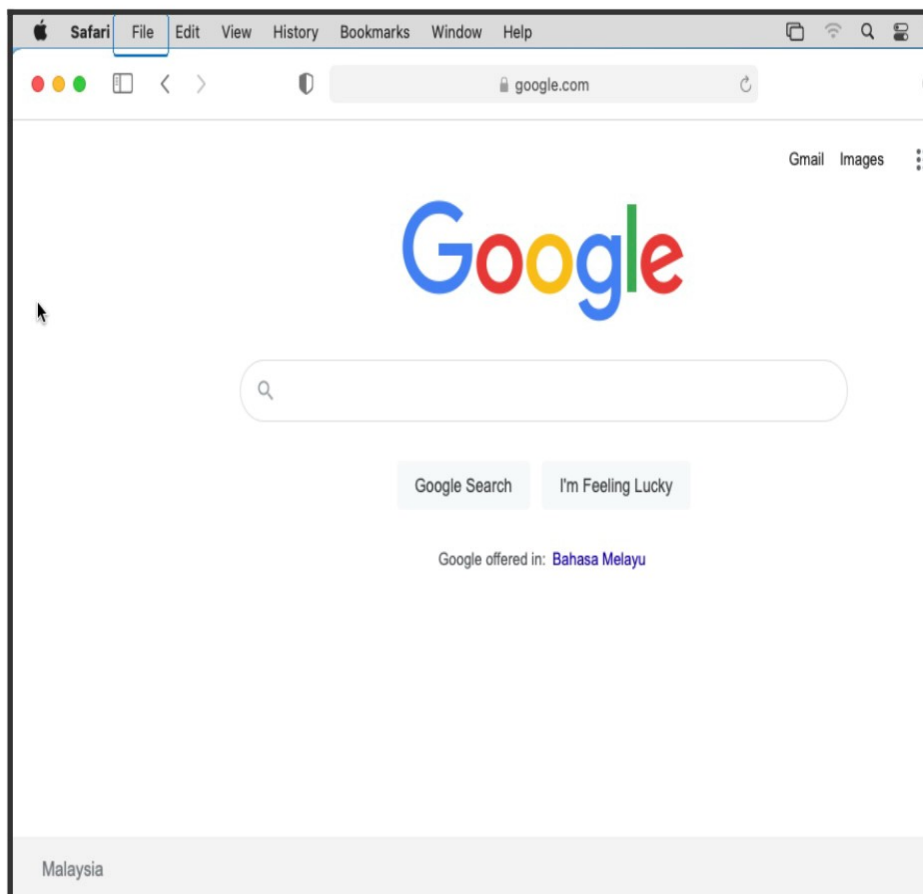
After adding the printer you will need to add authentication details see Below

How To Key-In User Authentication/Account Track On Printer Driver For MAC OS

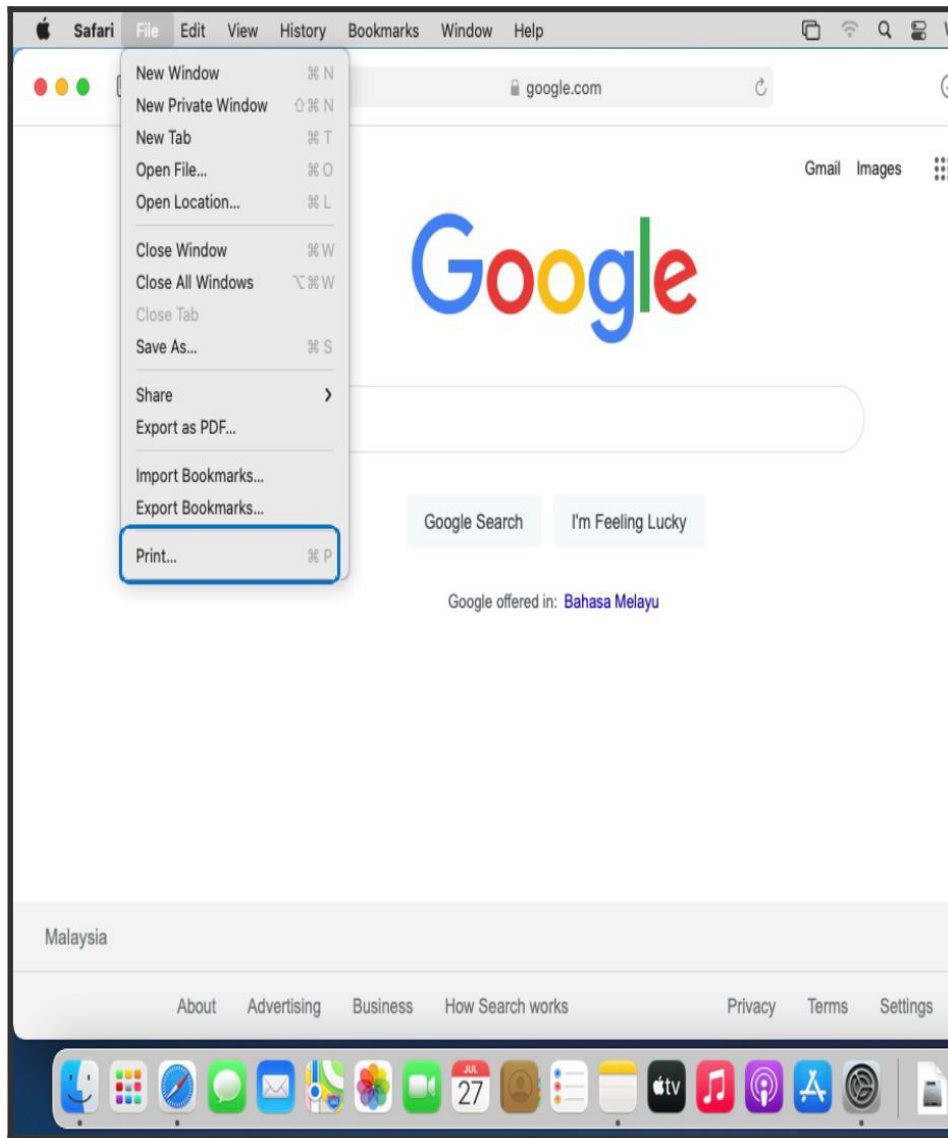
Guide On How To Key-In The User Authentication Or Account Track Details On The Printer Driver For MAC OS.

User Authentication Password On Printer Driver For MAC OS

STEP 1 - Open Chrome or any 3rd party software document (Word, Excel, Adobe Reader, etc), and go to File menu.

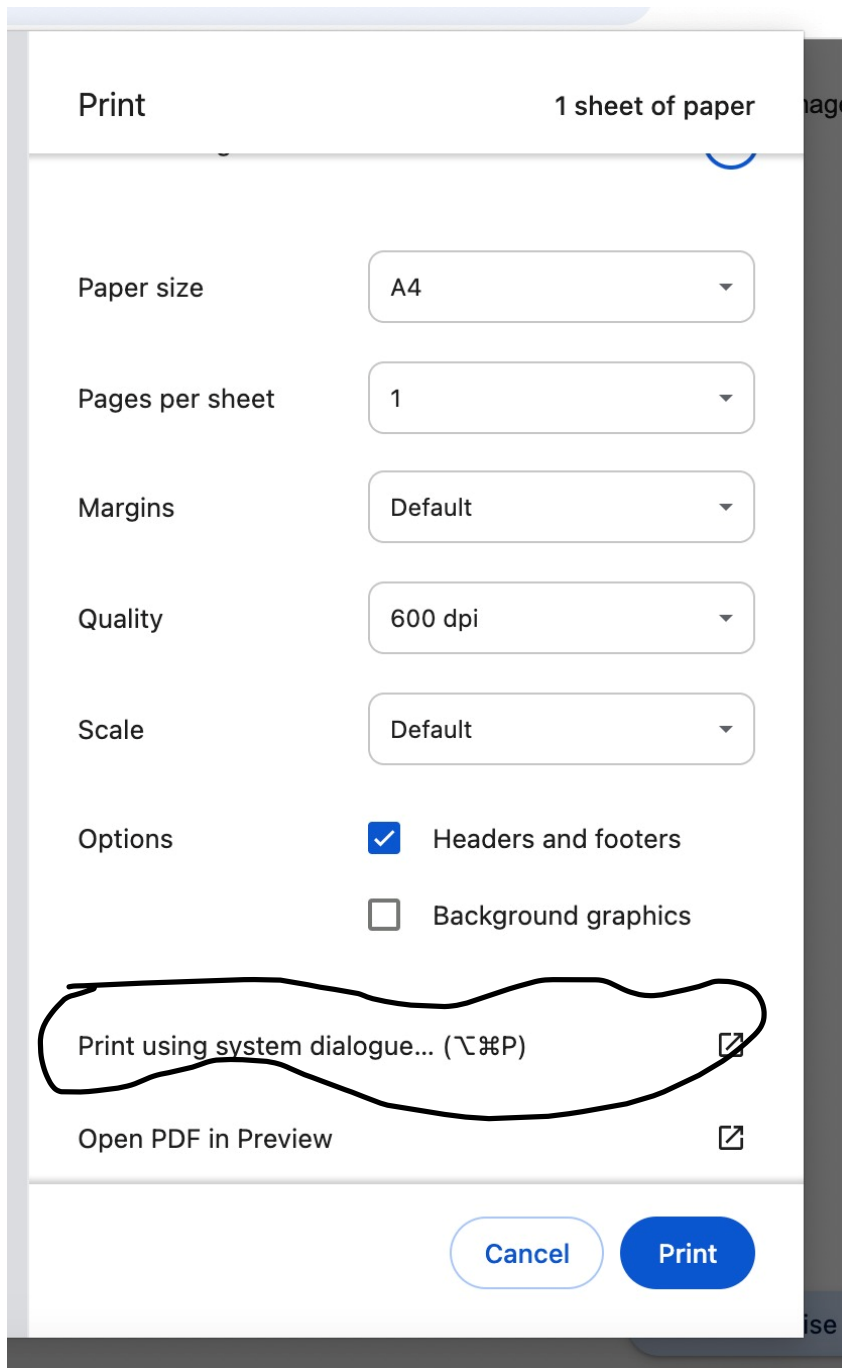


STEP 2- Select Print.

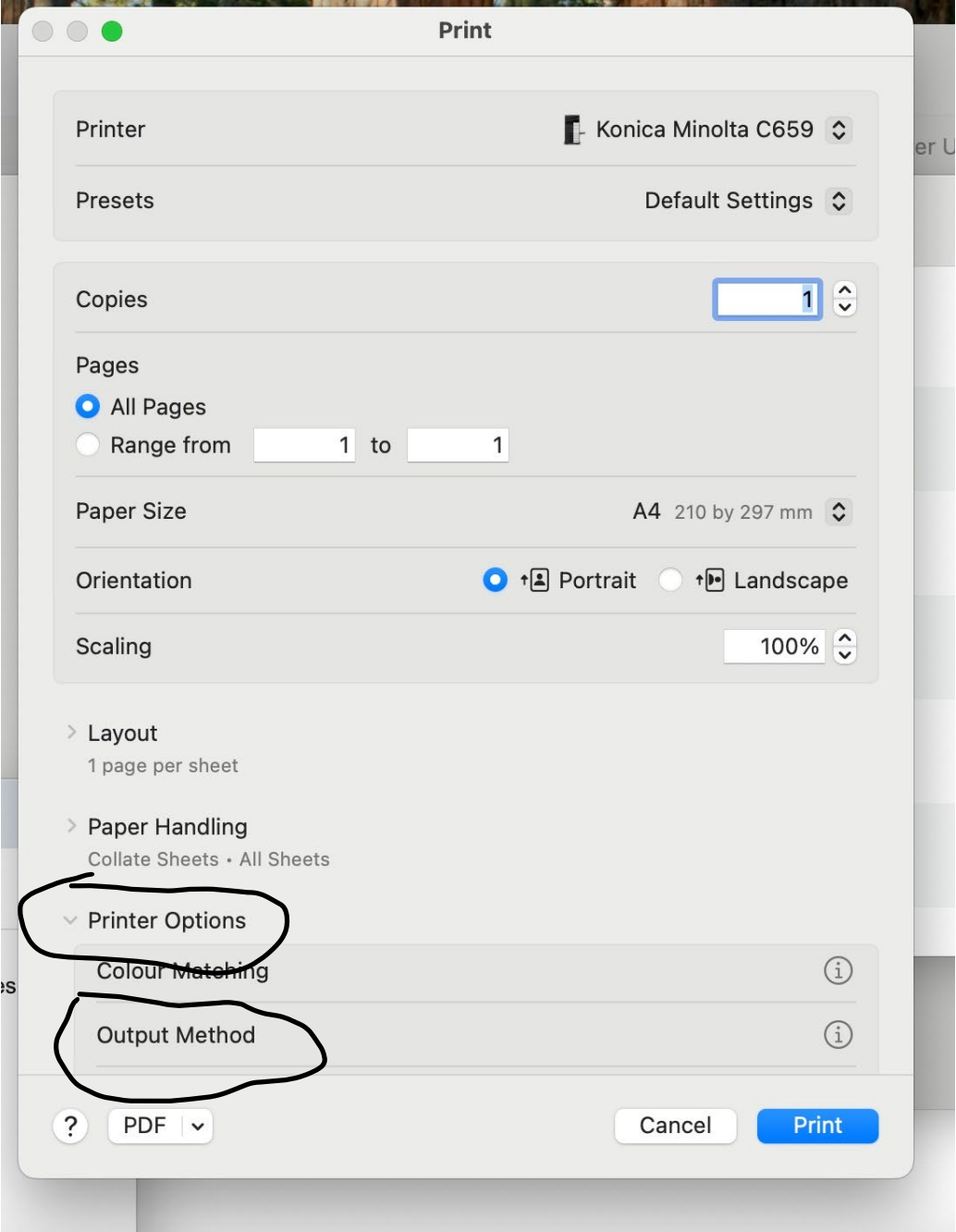


Newer MAC os

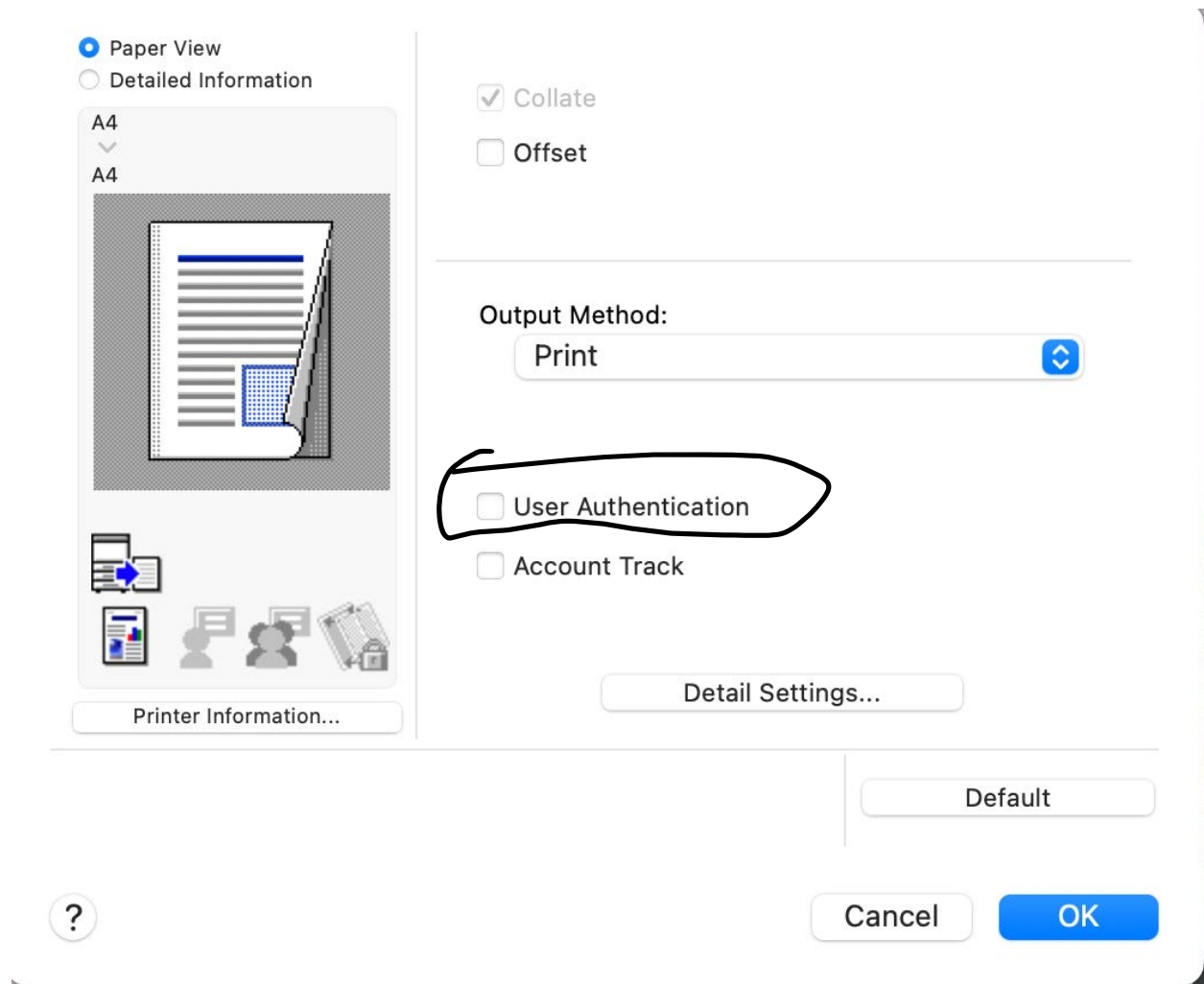
Step 3 – After clicking you will be greeted with the below click on -> more settings -> scroll down click on -> print using system dialogue



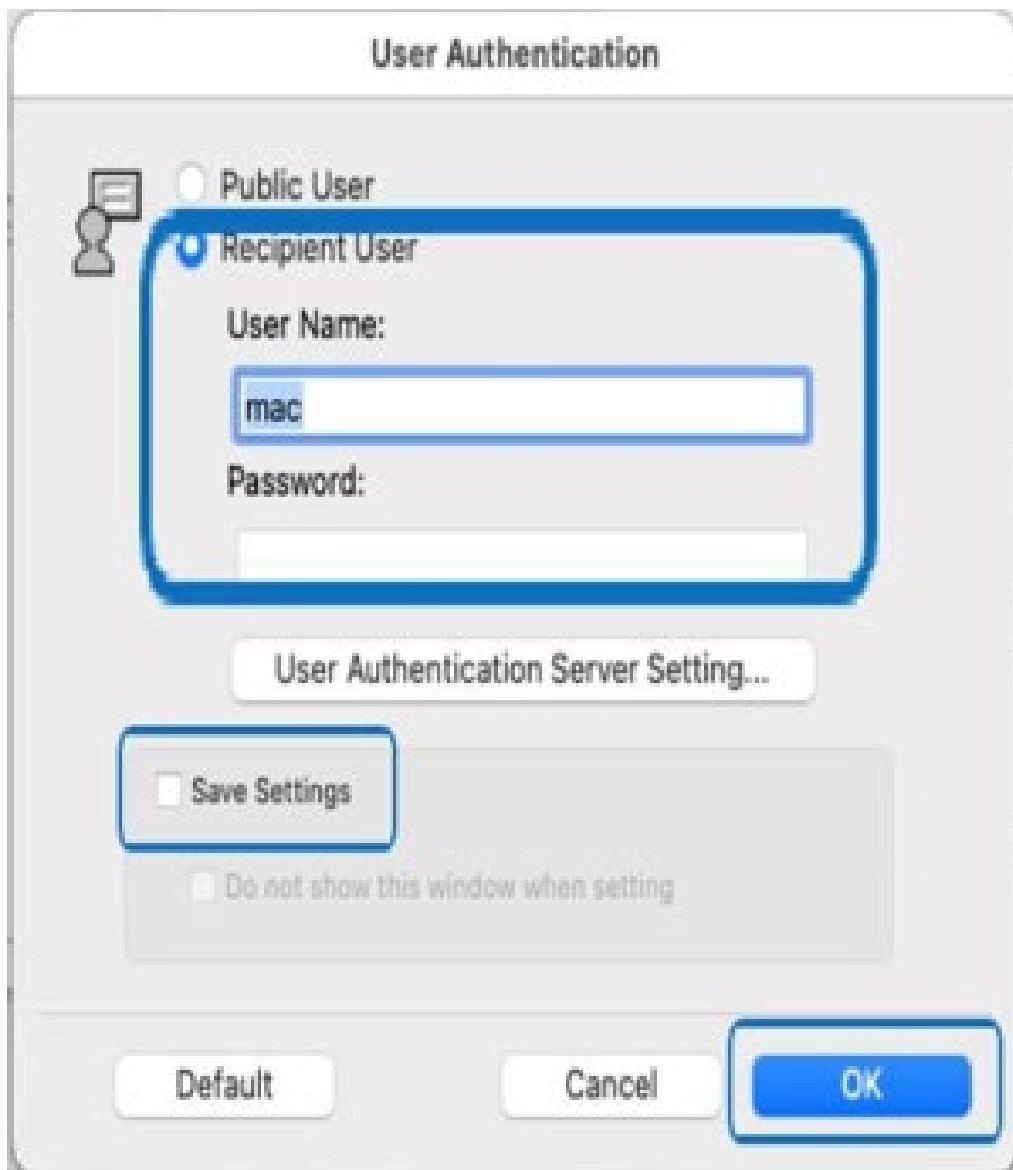
Expand Printer Options and click on Output Method



Click on User Authentication



Fill in your username and password for the printer, tick save settings to save the setting for user authentication.



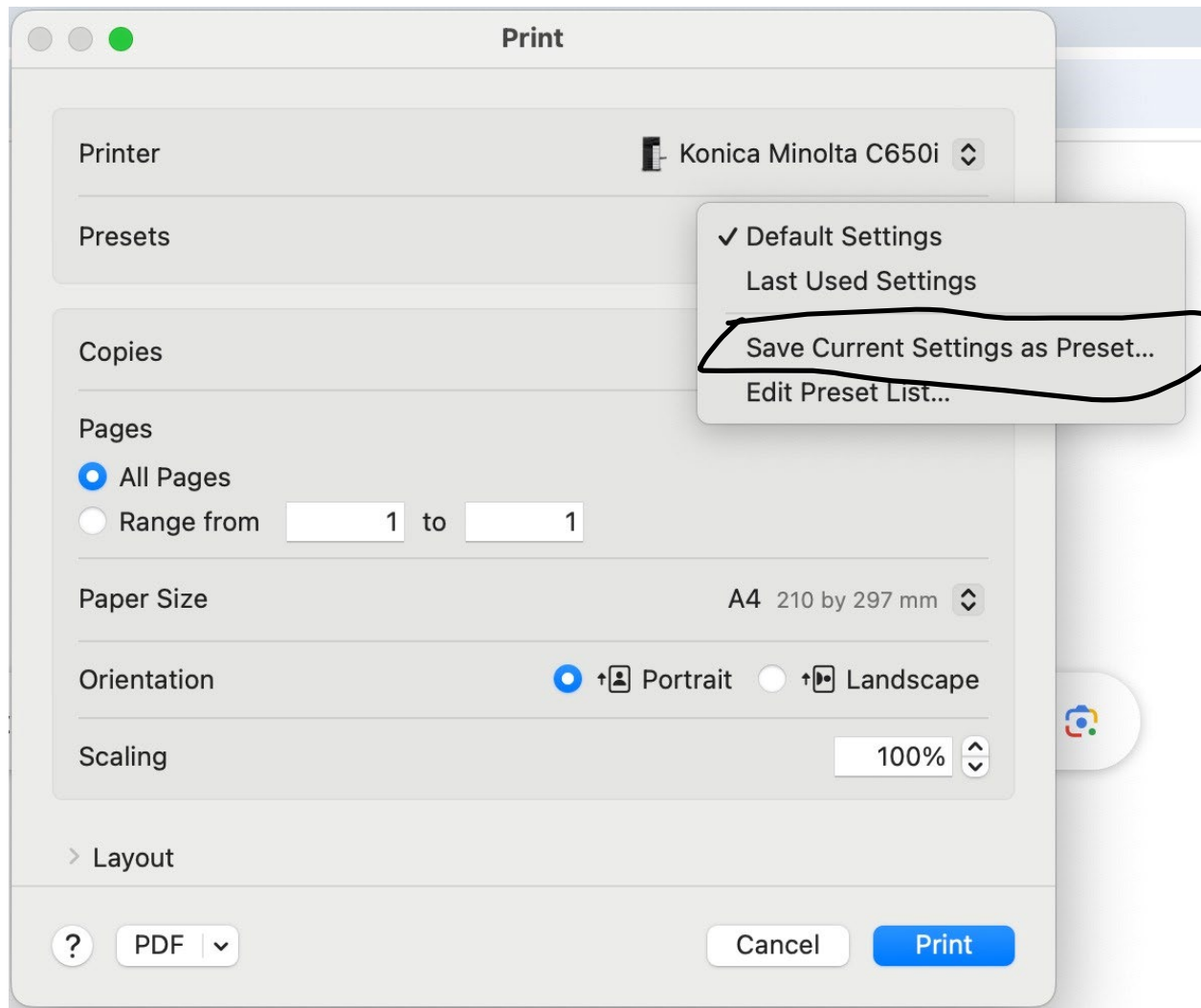
The image shows a 'User Authentication' dialog box. At the top, there are two radio buttons: 'Public User' (unselected) and 'Recipient User' (selected). Below the 'Recipient User' option, there are two text input fields. The first is labeled 'User Name:' and contains the text 'mac'. The second is labeled 'Password:' and is empty. Below these fields is a button labeled 'User Authentication Server Setting...'. At the bottom left, there is a checkbox labeled 'Save Settings' which is checked, and a checkbox labeled 'Do not show this window when setting' which is unchecked. At the bottom right, there are three buttons: 'Default', 'Cancel', and 'OK'.

- Enter your User Name and Password, then click “Save settings” followed by “OK”

Note:

- Please refer to xin yue’s email for the unique Username and Password which is different from the co11ab Wi-Fi Internet access.

Once done click ok, Proceed to the Preset Option to save the settings, select Save Current Settings as Preset. Then put a name on it and click OK to print it out. . .



Name it "Authentication" then save. Check if Excel is using the same preset as Word

Print

Printer

Konica Minolta C650i

Presets

Save Current Settings as Preset...

Orientation

Portrait Landscape

Scaling

100%

Preset Name:

Available For: Konica Minolta C650i
 All printers

Type: Custom Preset
 Print Job Preset

Cancel

OK

Output Method



Layout / Finish



Paper Tray / Output Tray



Cover Mode



Per Page Setting



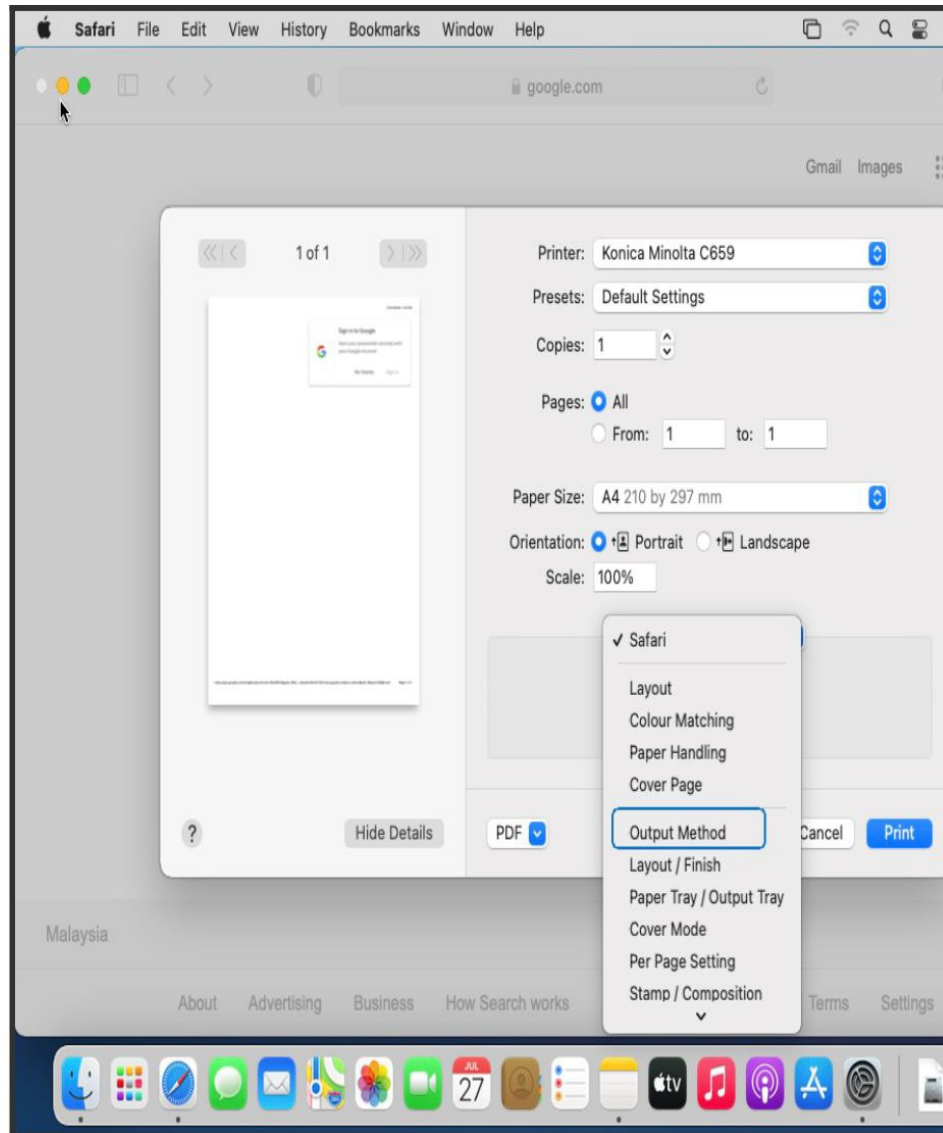
PDF

Cancel

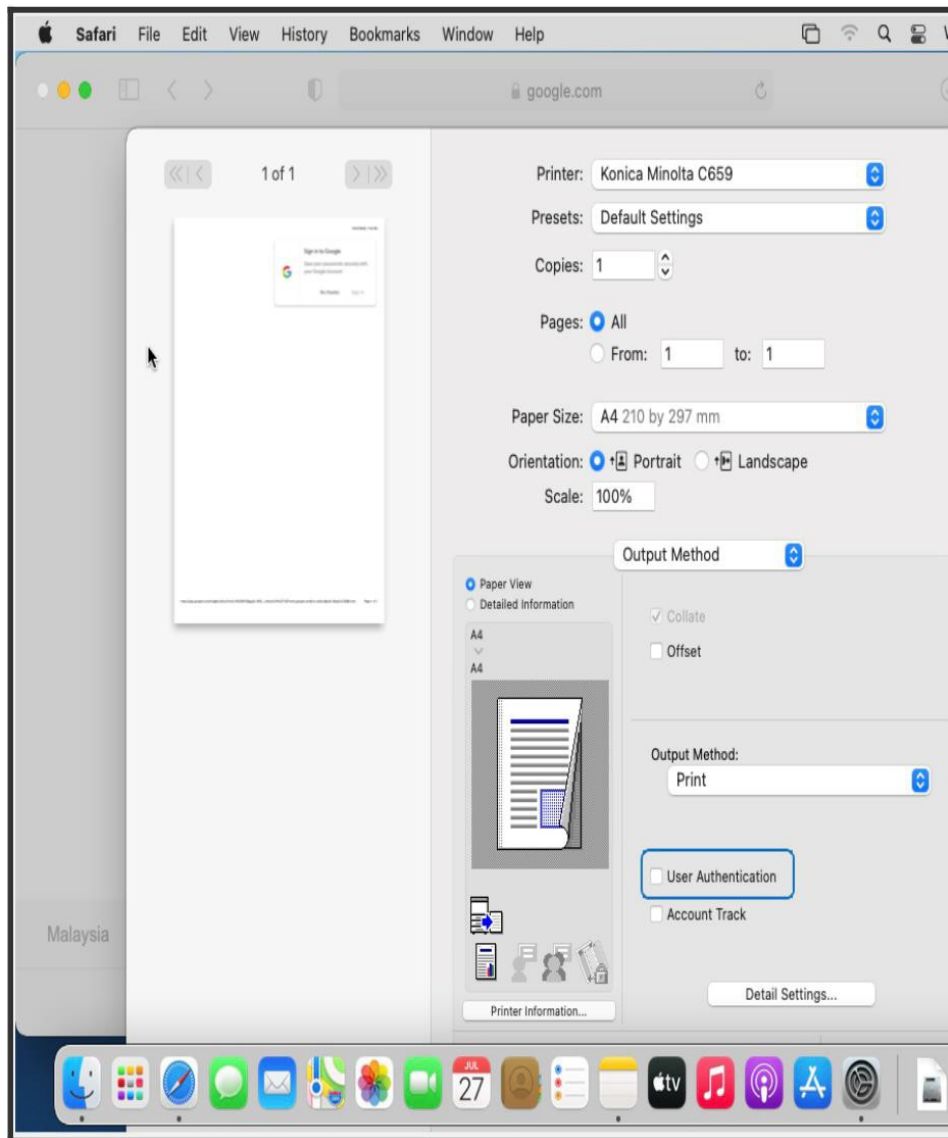
Print

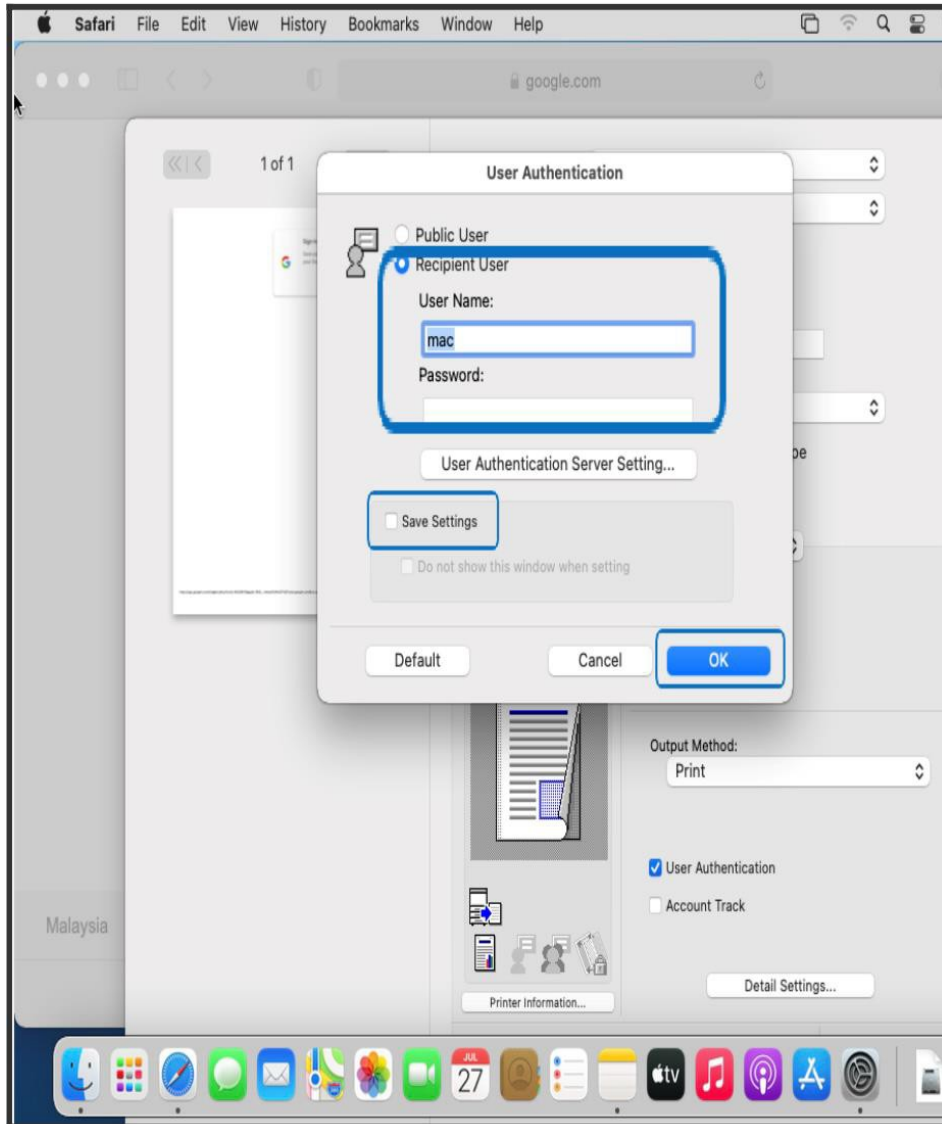
Older MAC Version

STEP 4 - Select Output Method.



STEP 5 - Tick the **User Authentication** and select either **Public User** or **Recipient User** then enter the **username** / **password** for the printer, tick save setting to save the setting for User authentication.



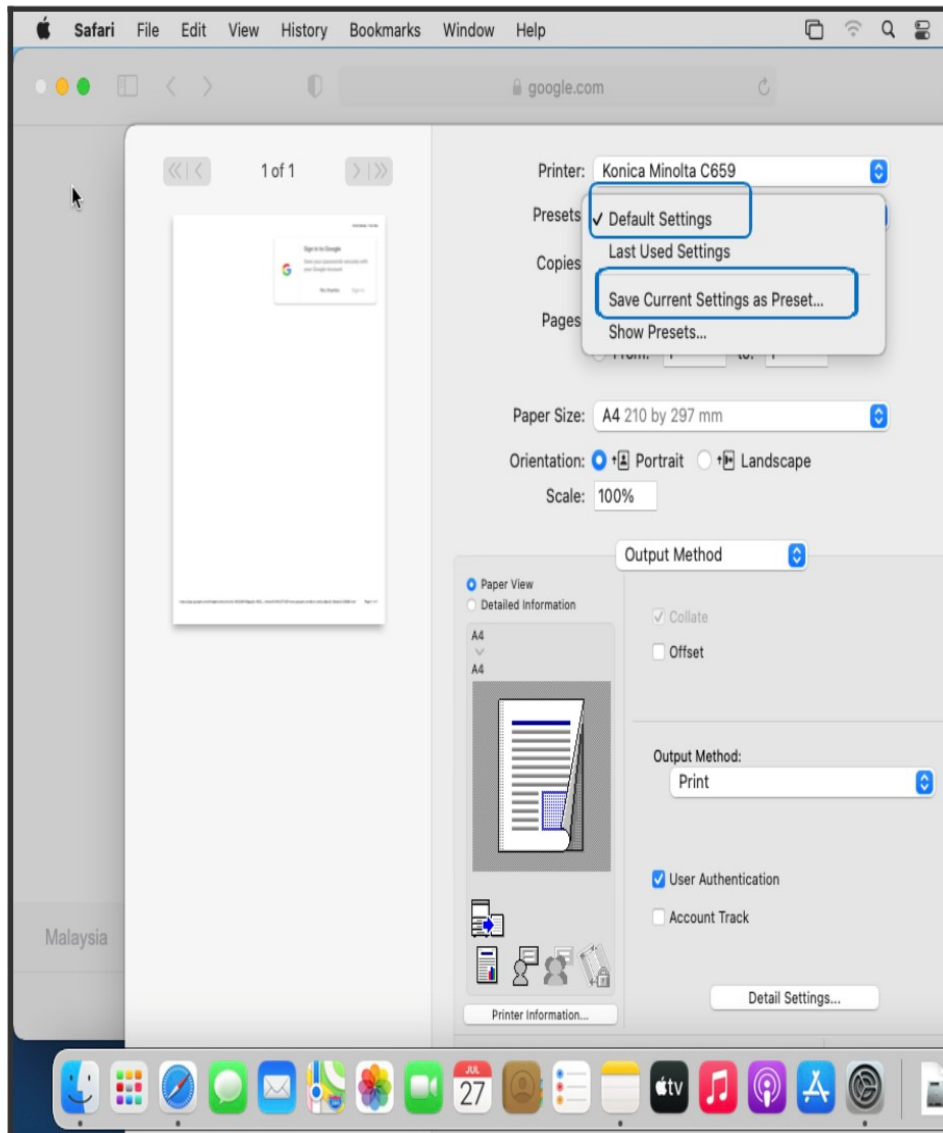


- Enter your User Name and Password, then click “Save settings” followed by “OK”

Note:

- Please refer to Imran’s email for the unique Username and Password which is different from the co11ab Wi-Fi Internet access.

STEP 6 - Once click ok, proceed to the **Preset Option** to save the settings, select **Save Current Settings as Preset**. Then put a name on it and click OK to print it out.



Name it "Authentication" then save. Check if Excel is using the same preset as Word.

